

Right-of-Way (ROW) Process

ROW easements allow for the safe construction, operation, and maintenance of linear infrastructure projects including transmission lines. Our team will work closely with landowners during the ROW process to introduce the project and ourselves, answer questions and solicit input, and negotiate and acquire necessary land rights.

Project representatives will contact affected landowners and hold individual meetings to discuss the ROW process, including the need for temporary right-of-entry access, negotiation and acquisition of temporary and permanent land rights, and the restoration and damage process.

1 Right-of-entry for temporary access (2026–2027)

Project representatives will reach out to impacted landowners to request temporary access to a portion of their property. This temporary access is granted through a right-of-entry agreement allowing Project team members to conduct surveys and studies to inform the routing process.

2 Easements (2026–2028)

As the route is defined, impacted landowners will be contacted to begin the ROW negotiation and easement acquisition process. An offer package will be presented to landowners based on fair market value. Our goal is to work closely with landowners to resolve concerns and reach a voluntary agreement. The easement agreement is recorded with the County Recorder.

3 Construction (2029–2032)

Project owners will construct the transmission line within the ROW while maintaining ongoing communications with landowners. Temporary roads may be needed during construction.

4 Restoration (2029–2033)

After construction, damages to crops and property will be settled through reimbursement or restoration. Project owners are responsible for maintaining the easement area.

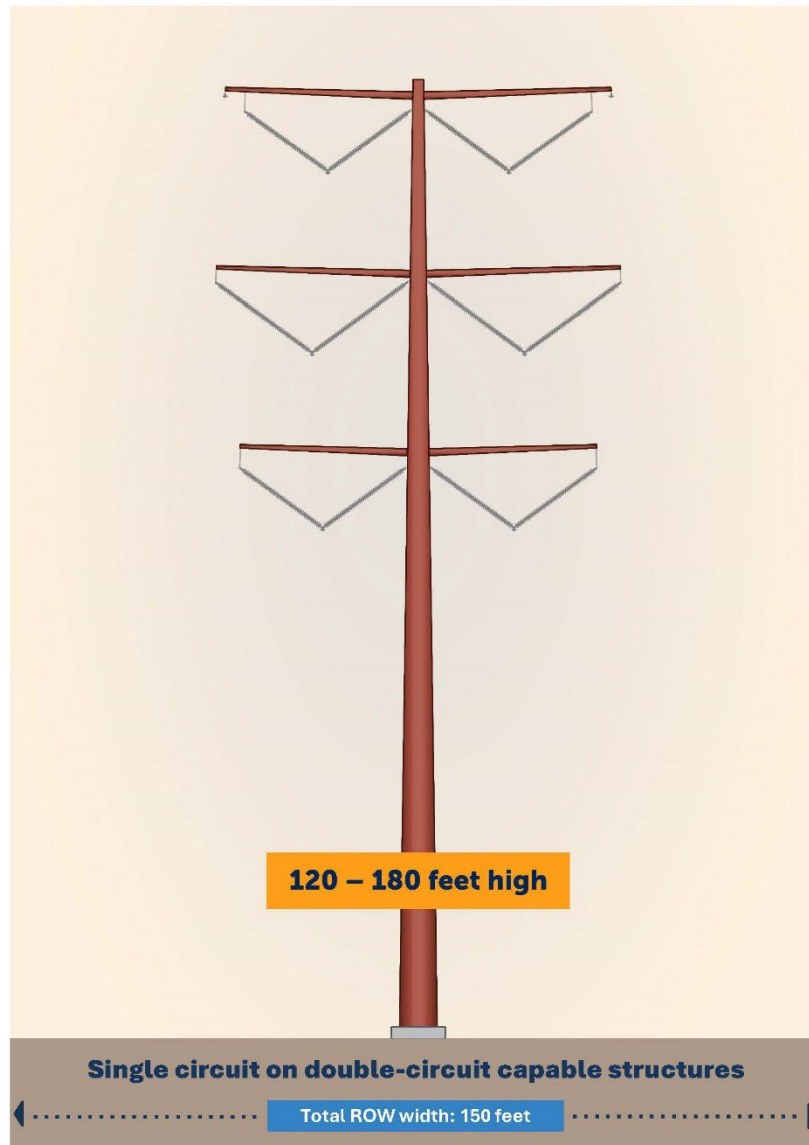
Can this Project share ROW with an existing line?

There may be opportunities to overlap the Project ROW with an existing transmission line corridor. We estimate up to 30 to 40 feet of ROW may be shared between the existing structure and the new structure depending on engineering, construction and topography.

How large of an easement is needed for the Project?

The typical width of the ROW will be a minimum of 150 feet (75 feet on each side of a transmission line). It is sometimes necessary to secure additional permanent ROW at angles or areas where specialty structures are used. It could also be necessary to secure temporary areas next to the permanent ROW for stringing and construction access. The Project team will design the route to maximize the distance of the transmission structures from homes and businesses.

Right-of-Way (ROW) Typical Construction



Connect with us

Stay up to date on the project by signing up for email updates or talking to a project team member.

Website: mrctransmissionproject.com

Email: connect@mrctransmissionproject.com

Phone: 1-888-419-5670